

SCAN FOR
WEBSITE



C.A.V.E.

SENSORY FOR ALL





**THE ONLY
MOBILE SENSORY
ROOM ON THE
MARKET**

CAVE
SENSORY FOR ALL



FIND OUT MORE!
@sensorycave



**PROVIDE A
SAFE HAVEN
FOR YOUR CUSTOMERS**

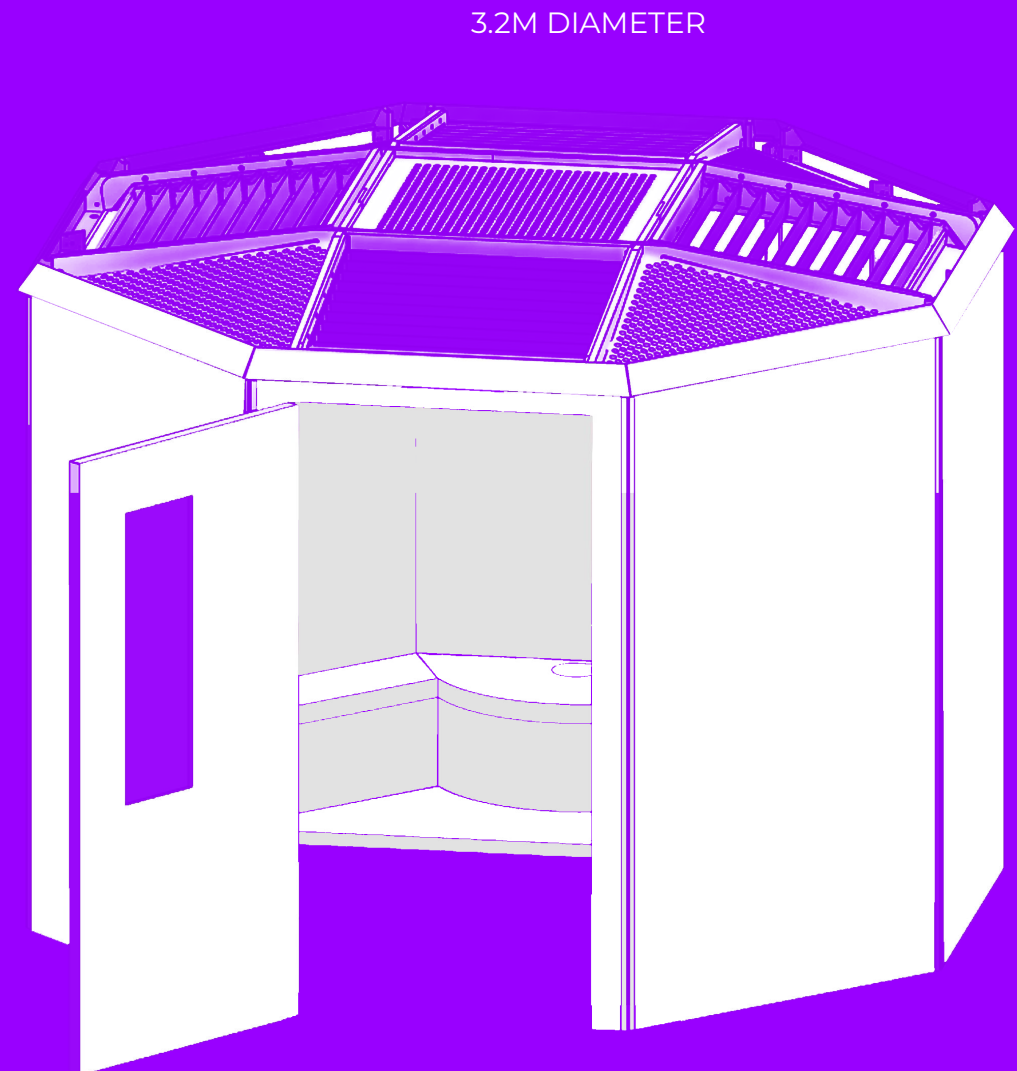


YOUR TURNKEY SOLUTION

The disabled community represents 22% of the British public, and subsequently the 'Purple Pound'. 75% of disabled people and their families have walked away from a UK business because of poor accessibility or customer service. The annual estimated spending power of this community is £274 billion – and counting.

“Businesses lose approximately £2 billion a month by ignoring the needs of disabled people.”

We Are Purple



WHAT IS A C.A.V.E.?

(Controlled Audio Visual Environment)

Designed to reduce anxiety and sensory overload, C.A.V.E. was created to support families and individuals who might otherwise avoid busy, loud and bright places, in turn, transforming these spaces into more accessible and inviting destinations with the support of an interactive, enriching and immersive experience.



REDUCING SOCIAL ISOLATION FOR INDIVIDUALS AND FAMILIES

C.A.V.E.
SENSORY FOR ALL



BECOMING MORE INCLUSIVE FOR THE PUBLIC



Treasures inside the C.A.V.E. will illuminate the imagination, spark creativity and engage the senses. Utilising tactile panels, sound activated displays and interactive technology to provide a calming atmosphere and soothing

SENSORY ROOM EXPERIENCE.





Designed with industry leading specialist equipment, the C.A.V.E. aims to be as inclusive and accessible as possible, with three different program settings to choose from to help tailor the experience to your requirements.

EACH C.A.V.E. CONTAINS:

- Fibre-optic Twinkle Panel
- Musical Touch Wall
- 1.5m Colour Column with vibration
- Bright Sparks Panel
- Infinity Tunnel
- UV Musical Tactile Panel
- Vibro Acoustic Seat
- Projectors
- UV Carpet & Lights
- Rainbow Ball
- Durable Soft Play Seating
- Mobile Wifi



WATCH OUR VIDEO

SELF LED & SELF SANITISED

Our goal is to support individuals and encourage independence, for both the

special needs community and the families of those who would benefit from the Sensory C.A.V.E..

Each experience is allocated a 30 minute time slot via our online booking system. A unique 4-digit code is sent to the customer via text and email, to enter upon their arrival and unlock the C.A.V.E. meaning no operator or management is required. Sanitised wipes are provided inside the C.A.V.E. to use before and after each booking.

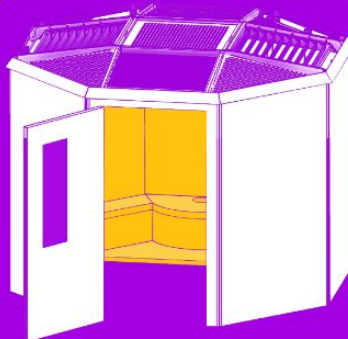


ABOUT C.A.V.E.

Less than 3.3m diameter in footprint, the C.A.V.E. can be disassembled, moved and assembled in 3 hours, making it the only mobile sensory room on the market.

Perfect to place in empty units or quieter areas on the mall.

Only 1 x 13amp power supply required!



Purchase & Hire options available



In Britain 2.5 million people have a learning disability which includes those with autism and/or those with sensory processing disorder.

PROVIDE A SAFE HAVEN FOR YOUR CUSTOMERS.



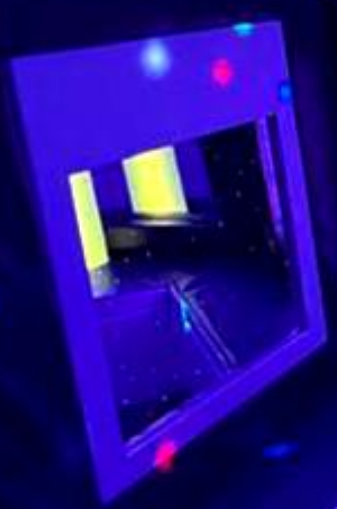
YOU CAN SEE THE BEAUTIFUL LIGHTS

YOU CAN TOUCH THE PANEL

YOU CAN CUDDLE THE COLOURS

YOU CAN FEEL YOUR HANDS

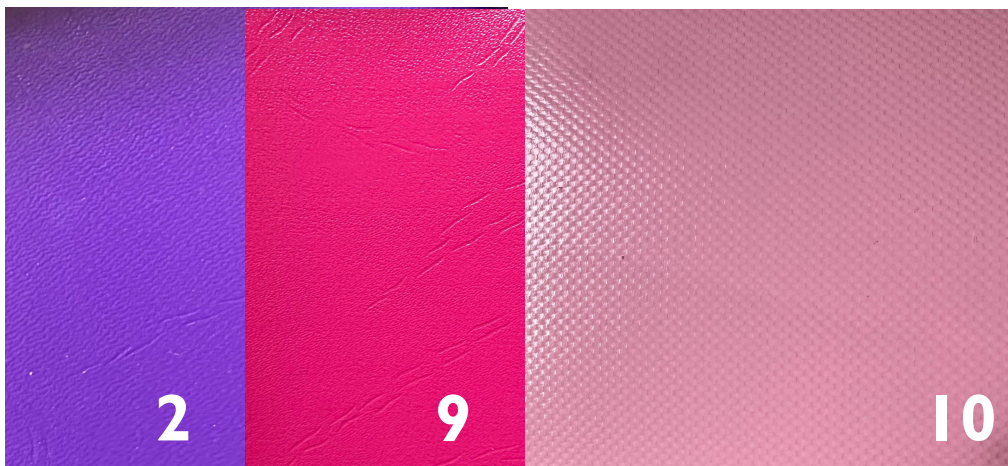
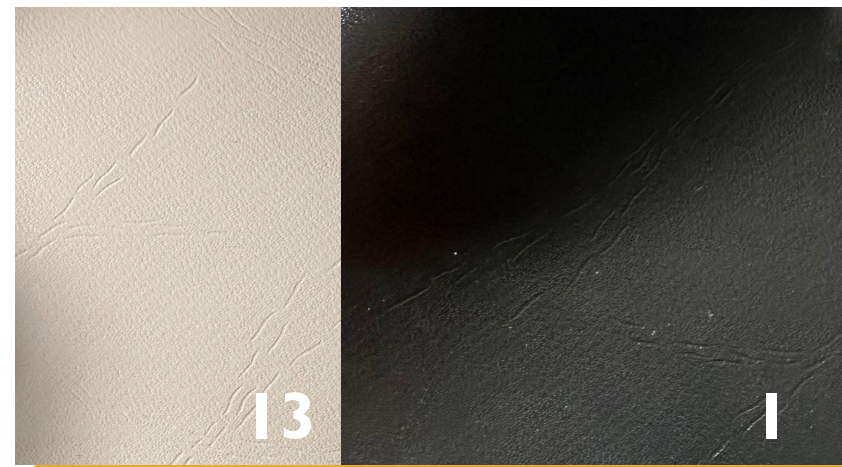
YOU CAN PLAY WITH LIGHT



A FUNCTIONAL, INTERACTIVE AND IMMERSIVE EXPERIENCE



**BESPOKE
COLOURS AVAILABLE**



Bespoke CAVE soft play colours available
Lead time - 6 WEEKS

Colours 2 and 13 currently used in standard CAVE

13 is great for UV

C.A.V.E.[®]
SENSORY FOR ALL

in

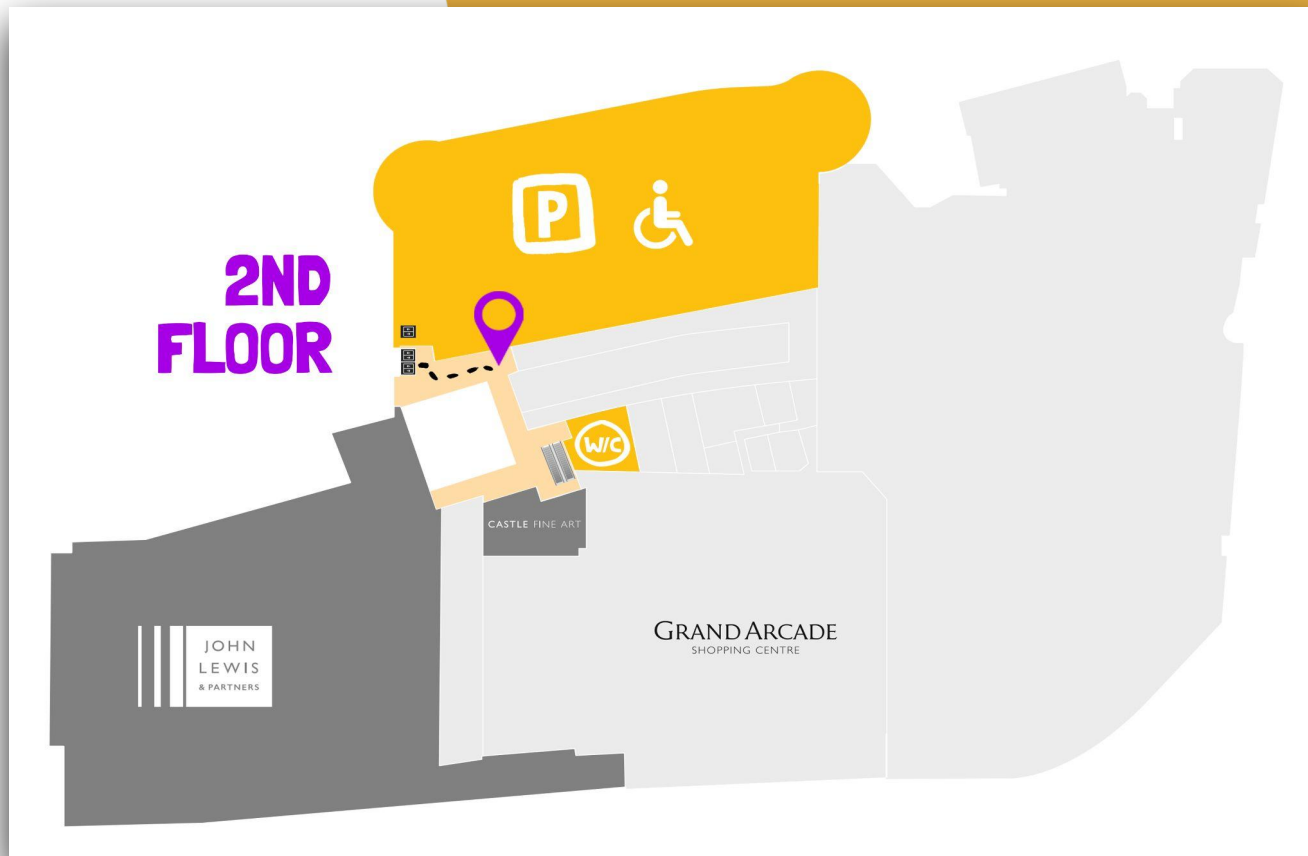
RETAIL

GRAND ARCADE

SHOPPING CENTRE



The Sensory C.A.V.E. was successfully installed at the Grand Arcade Shopping Centre for a 6 month trial, which was extended due to popular demand. With an overall booking average of 87%, the C.A.V.E. was nearly at full capacity!



While in the shopping centre my son was getting very overwhelmed and very upset and as soon as we got in the cave his mood totally changed and his face lit up with pure joy it was one of my favourite moments I've shared with my son ever.





ENVIRONMENT

E

SCAN ME TO BOOK!



CAVE

SENSORY FOR ALL

AT GRAND ARCADE SHOPPING CENTRE

REDUCING SOCIAL ISOLATION FOR INDIVIDUALS AND FAMILIES



Photo-M

THIS MACHINE IS OUT OF ORDER
SORRY FOR ANY INCONVENIENCE

NEW & EASY
PASSPORT



Grand Arcade

17 February at 10:48 · 🌐

Discover our brand new C.A.V.E on the second floor of Grand Arcade!



Utilising specialist sensory equipment, C.A.V.E. has been created on our second floor with the aim to create a 'safe haven' from the hustle and bustle. This Controlled Audio Visual Environments allow families and individuals to visit busy places that might otherwise be avoided, due to potential sensory bombardment and anxiety inducing environmental factors.

Book your slot here> <https://www.grandarcade.co.uk/events/cave/>



👍❤️ 240

442 comments 263 shares

👍 Like

💬 Comment

➦ Share

We took our little girl today and she loved every moment especially the tube and mirror ❤️



❤️ 5



✍️ Author

Grand Arcade

Thank you for sharing this wonderful photo 🥰 would we be able to share this on our social media? Best wishes, Grand Arcade team

👍 1

Grand Arcade absolutely thats fine with me 😊

👍 1

this is so cute ❤️ I have a little helmet wearer too 💙 glad she enjoyed herself

❤️ 2

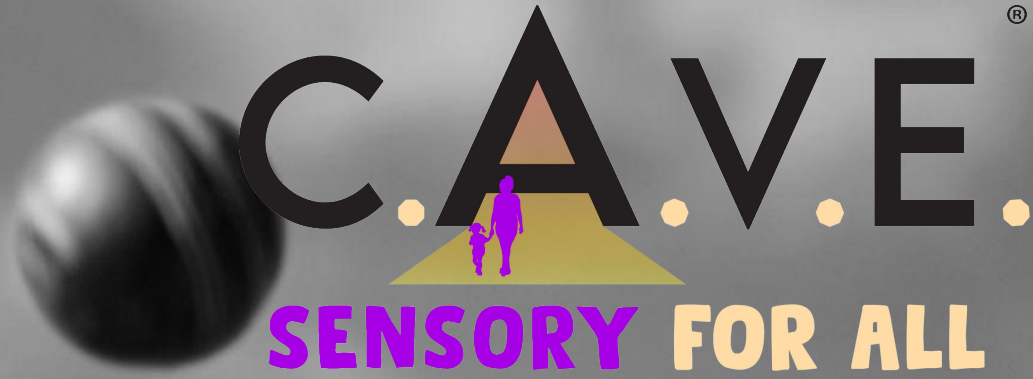


✍️ Author

Grand Arcade

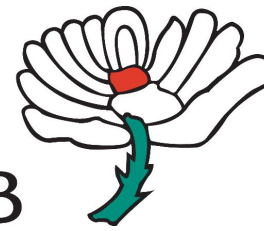
thank you 😊

thanks aw lovely hope it's going well ! My little one started hers 3 weeks ago 😊xx

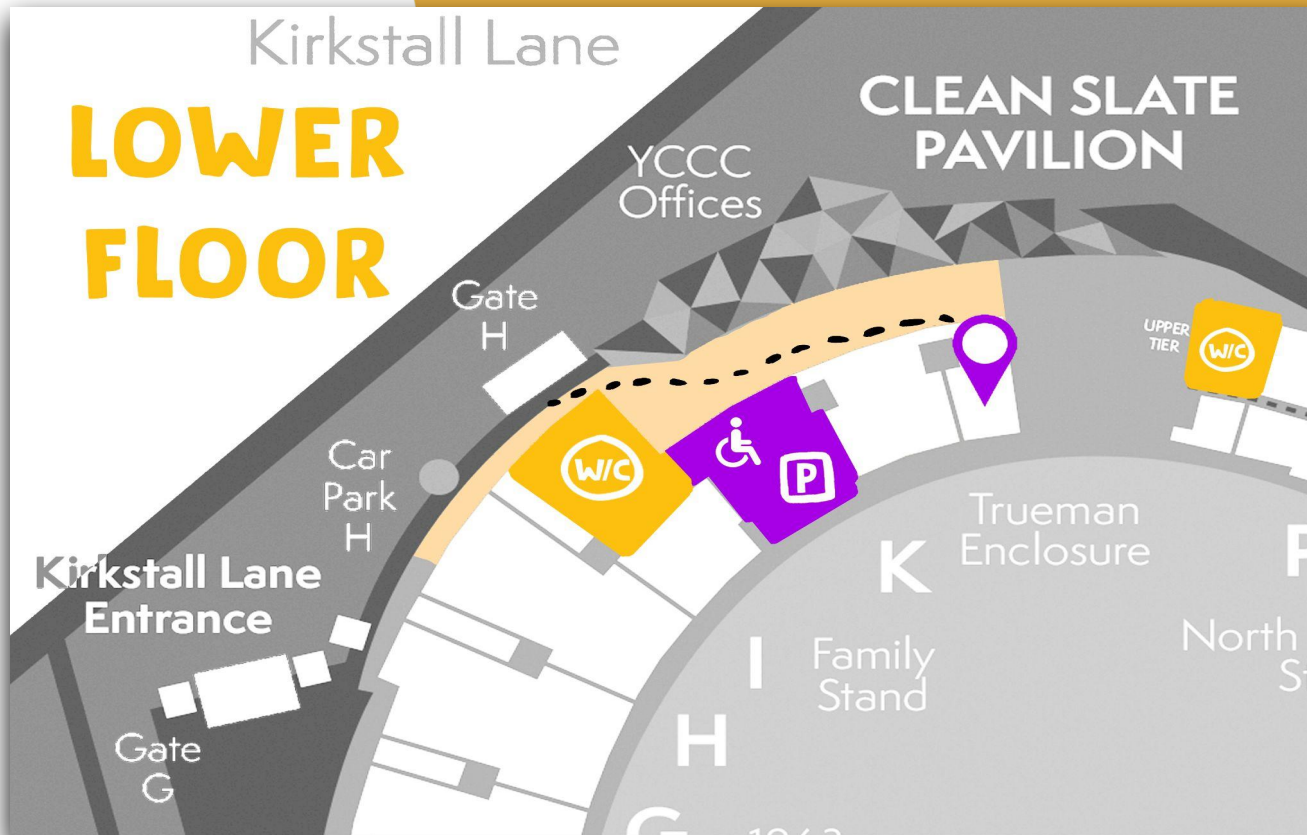


AT THE
CRICKET

THE YORKSHIRE COUNTY CRICKET CLUB



The Sensory C.A.V.E. was successfully installed at the YCCC grounds, covering their 2022 season. Feedback was so overwhelmingly positive, it's going back for 2023!
User feedback:



Absolutely amazing! To have the facility and at no charge was a god send. As a parent of a young child at a cricket match, being able to break the day up was so valuable and made for an overall even more enjoyable day! My son loved the facility!





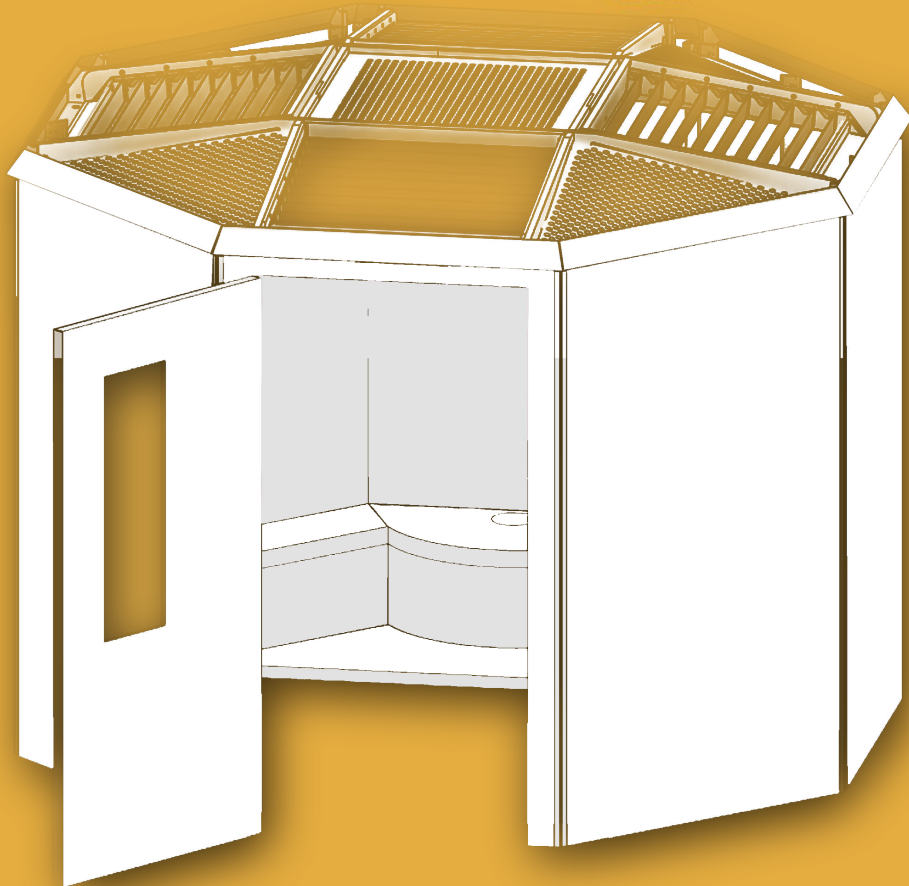
WHAT IS A C.A.V.E?
BECOMING MORE INCLUSIVE FOR THE PUBLIC

J80 NTD

The True

No Smoking
Please Do Not

A BLANK CANVAS



The Sensory C.A.V.E. was initially designed with retail and leisure spaces in mind, but with rapid growing interest in the sporting field, we are developing new ways to include more bespoke elements to allow you to provide a more site specific solution for your customers.

Bespoke printed walls and astroturf flooring are effective ways to tailor the Controlled Audio Visual Environment to be more in keeping with your location.





If you'd like more information as to how to bring this product to your location, or want to experience the CAVE for yourself? Please contact:

sales@sensorycave.co.uk

01422 366 881

P.O.A.